

How to Apply Hair Tinsel Extensions

Maddison Williams - Instruction Sequence - November 3, 2021

Necessary Tools

★ Ceramic Beads



Image Courtesy of Walmart

★ Curved Nose Pliers



Image Courtesy of Walmart

★ Tinsel strips



Image Courtesy of Walmart

★ Threader



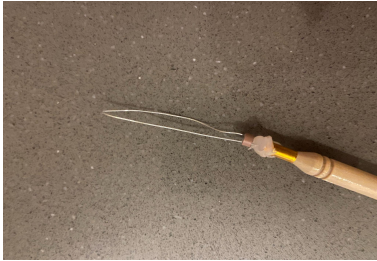
Image Courtesy of Walmart

★ Scissors

★ Hair Clip

Steps

1. Pull the ceramic bead to the base of the metal loop on the threader



2. Take the desired amount of tinsel out of the package
Tip: More tinsel leads to thicker extensions



3. Fold the tinsel in half to create a loop and pull it through the metal loop of the threader



4. While holding the tinsel loop, push the bead forward on the loop, forcing the loop of tinsel through the bead



Image Courtesy of Willbond Store

5. Fold the loop of tinsel over the bead and tighten it around the bead to secure it



6. Place the bead with the tinsel back on the threader



7. Select 5-10 strands of hair one inch away from the part and clip any hair closer to the part to the other side of your head
8. Put the strand of hair through the threader



9. Pull the bead forward and onto the hair



10. The bead should be half an inch away from the base of the hair strand



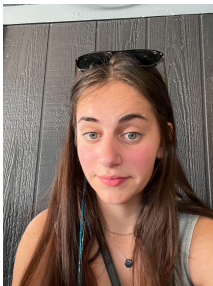
11. Take the pliers and clamp the bead tightly to the hair



Image Courtesy of WILLBOND Store

12. The bead should be tight on the hair

13. Cut the bottom of the tinsel to the desired length



The tinsel should look like this when finished.